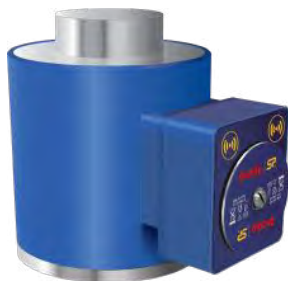


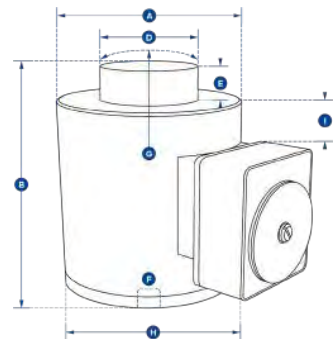


# LoadSafe



- Wireless range of 1000m or 3280ft.
- High grade 17-4PH stainless steel, providing excellent strength and corrosion resistance.
- Proprietary 2.4 GHz wireless.
- Accuracy of  $\pm 0.1\%$  FS.
- Environmentally sealed to IP67 or NEMA6.
- Stocked capacities up to 1000t.
- Industry leading wireless range up to 1000m or 3280ft.
- Internal antenna.
- ATEX & IECEx version for hazardous area zones 0, 1 & 2 available.
- Battery life of 1200 hrs.
- Compact size.
- Remote on/off from handheld display or software.
- Design validated by FEA.
- Bluetooth option is available and is supplied with a free HHP App for iOS and Android.

## LOAD MONITORING



Part Numbers SP	WNI5TC	WNI10TC	WNI25TC	WNI50TC	WNI100TC	WNI150TC	WNI300TC	WNI500TC	WNI1000TC	
Crosby	2789197	2789191	2789193	2789196	2789190	2789192	2789194	2789195	2789138	
Capacity	(te)	5	10	25	50	100	150	300	500	1000
	(lb)	11,000	22,000	55,000	110,000	220,000	330,000	660,000	1,100,000	2,200,000
Resolution	(te)	0.001	0.002	0.005	0.01	0.05	0.05	0.1	0.2	0.5
	(lb)	2	5	10	20	100	100	200	500	1000
Units	(metric)	metric tons								
	(imperial)	pounds								
Weight	(kg)	6.2	6.2	6.2	6.2	15.5	15.5	65	65	172
	(lb)	13.64	13.64	13.64	13.64	34	34	143	143	379
Design Factor	3:1									
Battery Type	Loadcell 4 x AA Alkaline									
Battery Life	Loadcell 1200 hours continuous (500 hours if Bluetooth)									
Operating Temp.	-10°C to +50°C / 14°F to 122°F									
Accuracy	$\pm 0.1\%$ of full scale									
Frequency	2.4 GHz									
System Range (max)	1000 meters / 3280 feet (100 meters / 328 feet if Bluetooth) (500 meters / 1640 feet if ATEX/IECEx)									
Data Rate	3 Hz (configurable to 200Hz)									
Protection	IP67 / NEMA6									
Dimension ØA	(mm)	100	100	100	100	152	152	185	185	362
	(in)	3.94	3.94	3.94	3.94	5.98	5.98	7.28	7.28	14.25
Dimension B	(mm)	127	127	127	127	184	184	300	300	310
	(in)	5.00	5.00	5.00	5.00	7.24	7.24	11.81	11.81	12.20
Dimension ØD	(mm)	59	59	59	59	80	80	155	155	270
	(in)	2.32	2.32	2.32	2.32	3.15	3.15	6.10	6.10	10.63
Dimension E	(mm)	16	16	16	16	26	26	27.5	27.5	40
	(in)	0.63	0.63	0.63	0.51	1.02	1.02	1.08	1.08	1.57
Dimension F	(mm)	M18 x 2.5	M18 x 2.5	M18 x 2.5	M20 x 2.5	M20 x 2.5	M20 x 2.5	M20 x 2.5	M20 x 2.5	M30 x 3.5
	(mm)	M18 x 2.5	M18 x 2.5	M18 x 2.5	M20 x 2.5	M20 x 2.5	M20 x 2.5	M20 x 2.5	M20 x 2.5	M30 x 3.5
Dimension G	(mm)	152	152	152	152	432	432	432	432	950
	(in)	5.98	5.98	5.98	5.98	17.01	17.01	17.01	17.01	37.40
Dimension H	(mm)	158	158	158	158	208	208	241	241	422
	(in)	6.22	6.22	6.22	6.22	8.19	8.19	9.49	9.49	16.61
Dimension I	(mm)	6	6	6	6	7	7	21.5	21.5	102
	(in)	0.23	0.23	0.23	0.23	0.27	0.27	0.27	0.54	4.02
Loadcell top to SA700 top	(in)	0.23	0.23	0.23	0.23	0.27	0.27	0.27	0.54	4.02

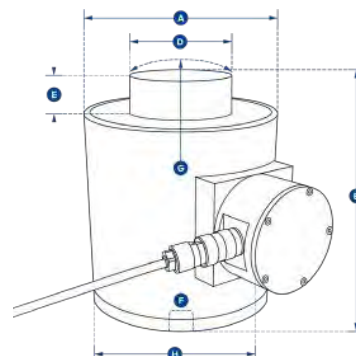


# Compression Loadcell

LOAD MONITORING



- Ranges from 5te to 1000te.
- High grade stainless steel, offering excellent strength and anti-corrosion properties.
- Can be supplied with optional loadcaps.
- Environmentally sealed to IP67 or NEMA6.
- Optional analog outputs.
- Lightweight, compact size.
- 10m or 30ft cable supplied as standard (other lengths available).
- Custom versions available.
- Design validated by FEA.



Requires connection to Crosby Straightpoint's Handheld Plus (HHP) or External Amplifier range (SA-3420) that can be configured to provide 4-20mA output for PLC or data logger integration.

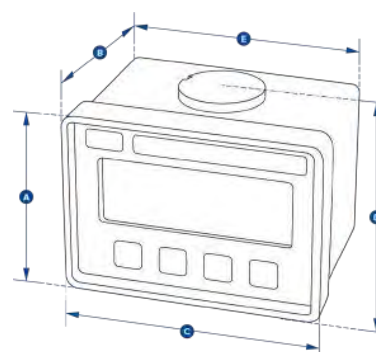
Part Numbers SP	NI5TC	NI10TC	NI25TC	NI50TC	NI100TC	NI150TC	NI300TC	NI500TC	NI1000TC	
Crosby	2789068	2789062	2789065	2789067	2789061	2789063	2789064	2789066	2789275	
Capacity	(te)	5	10	25	50	100	150	300	500	1000
	(lb)	11,000	22,000	55,000	110,000	220,000	330,000	660,000	1,100,000	2,200,000
Resolution	(te)	0.001	0.002	0.005	0.01	0.05	0.05	0.1	0.2	0.5
	(lb)	2	5	10	20	100	100	200	500	1000
Units	(metric)	metric tons								
	(imperial)	pounds								
Weight	(kg)	6.2	6.2	6.2	6.2	15.5	15.5	65	65	172
	(lb)	13.64	13.64	13.64	13.64	34	34	143	143	379
Design Factor		3:1								
Operating Temp.		-10°C to +50°C / 14°F to 122°F								
Accuracy		±0.1% of full scale								
Protction		IP67 / NEMA6								
Dimension ØA (mm)		100	100	100	100	152	152	185	185	362
	(in)	3.94	3.94	3.94	3.94	5.98	5.98	7.28	7.28	14.25
Dimension B (mm)		127	127	127	127	184	184	300	300	310
	(in)	5.00	5.00	5.00	5.00	7.24	7.24	11.81	11.81	12.20
Dimension ØD (mm)		59	59	59	59	80	80	155	155	270
	(in)	2.32	2.32	2.32	2.32	3.15	3.15	6.10	6.10	10.63
Dimension E (mm)		16	16	16	16	26	26	27.5	27.5	40
	(in)	0.63	0.63	0.63	0.51	1.02	1.02	1.08	1.08	1.57
Dimension F (mm)		M18 x 2.5	M18 x 2.5	M18 x 2.5	M20 x 2.5	M20 x 2.5	M20 x 2.5	M20 x 2.5	M20 x 2.5	M30 x 3.5
	(mm)	M18 x 2.5	M18 x 2.5	M18 x 2.5	M20 x 2.5	M20 x 2.5	M20 x 2.5	M20 x 2.5	M20 x 2.5	M30 x 3.5
Dimension G (mm)		152	152	152	152	432	432	432	432	950
	(in)	5.98	5.98	5.98	5.98	17.01	17.01	17.01	17.01	37.40
Dimension H (mm)		158	158	158	158	204	204	237	237	416
	(in)	6.22	6.22	6.22	6.22	8.03	8.03	9.33	9.33	16.38



# Loadblock Plus



- The highest standard resolution of any self-indicating compression loadcell on the market today (5000+ divisions).
- Low capacity, self-indicating compression loadcell.
- Large 25mm or 1in LCD display.
- 100Hz peak hold.
- Compact size.
- Push button tare.
- Preset tare.
- Peak hold.
- RS485 port for connection to data-logging system allowing remote viewing.
- Audible set-point alarm and an overload counter.
- Selectable units te, lbs, kN, kg.



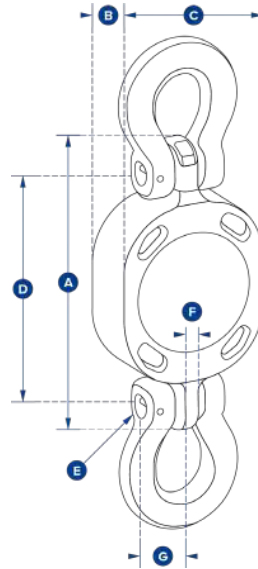
LOAD MONITORING

Part Numbers SP	LBP250KG	LBP500KG	LBP1T	LBP2T	LBP5T	
Crosby	2789035	2789037	2789034	2789036	2789038	
Capacity	(te)	250 kg	500 kg	1	2	5
	(lb)	550	1100	2200	4400	11000
Resolution	(te)	0.1 kg	0.2 kg	0.0005	0.001	0.001
	(lb)	0.2	0.5	1	2	2
Units	(metric)	metric tons, kilograms, kilonewtons and pounds				
	(imperial)	pounds, metric tons, kilonewtons and kilograms				
Weight	(kg)	0.9	0.9	0.9	1.5	3.1
	(lb)	2	2	2	3.3	6.8
Design Factor	4:1	5:1	5:1	5:1	5:1	
Battery Type	9v PP3					
Battery Life	80 hours continuous					
Display Type	6 digit 25mm LCD or 6 digit 1" LCD					
Operating Temp.	-10°C to 50°C / 14°F to 122°F					
Accuracy	±0.1% of full scale					
Protection	IP65 / NEMA4X					
Dimension A	(mm)	81	81	81	92	92
	(in)	3.19	3.19	3.19	3.62	3.62
Dimension B	(mm)	81	81	81	117	136
	(in)	3.19	3.19	3.19	4.61	5.35
Dimension C	(mm)	113	113	113	112	112
	(in)	4.45	4.45	4.45	4.41	4.41
Dimension D	(mm)	90	90	90	104	115
	(in)	3.54	3.54	3.54	4.09	4.53
Dimension E	(mm)	104	104	104		
	(in)	4.09	4.09	4.09	Not available in this capacity	



LOAD MONITORING

ChainSafe



2

Part Numbers SP	ChainSafe
Crosby	2789536
Capacity	4 t 88000 lb
Resolution	0.002 t 4 lb
Weight	2.5 kg 5.5 lb
Design Factor	4:1
Battery Type	Lithium Thionyl Chloride (non replaceable)
Battery Life	5 years based on 3 hours use per day
Operating Temp.	-10°C to +50°C / 14°F to 122°F
Accuracy	+/- 0.2% of full scale
Range	100 meters / 328 feet
Data Range	1 Hz
Protection	IP67 / NEMA6
Dimension A	164 mm 6.46"
Dimension B	35 mm 1.38"
Dimension C	85 mm 3.35"
Dimension D	132 mm 5.20"
Dimension E	13.2 mm 0.52"
Dimension F	11 mm 0.43"
Dimension G	28 mm 1.10"
Recommended Fittings	3/8" (10mm) G100 Chain fittings

- Designed to work with 10mm chain.
- Unmatched weight-to-strength ratio.
- Update rate of 1Hz and the Bluetooth signal effortlessly connects to any iOS or Android smartphone that has our free HHP App that will alert the operator on their smartphone if any overload is occurring.
- Bluetooth wireless range of 100m/328ft.
- No battery change required.
- Battery life 5 yrs based on 3 hrs use per day.
- Environmentally sealed to IP67/NEMA6.
- Internal antenna.
- Conforms to EN1677:2008.
- Fatigue tested to 30,000 cycles to 1.5x WLL.

ChainSafe is designed to be fitted with an array of The Crosby Group's chain fittings, and is an approved wireless tension loadcell capable of load monitoring of capacities up to 4t.

Grab Hooks:



Chain shortener:



Links:



Lashing:



Links:



Connectors:



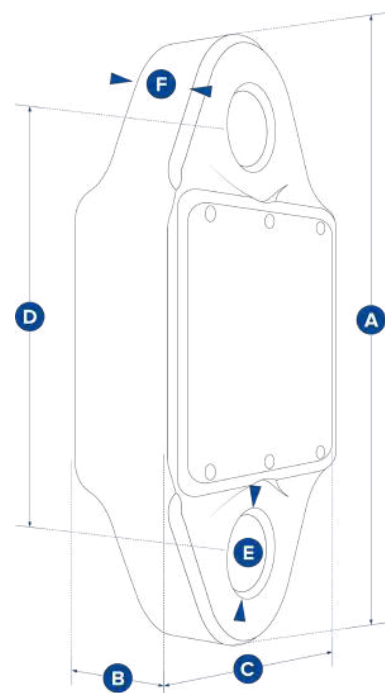
chain fittings are not included



# BlueLink



Designed to replace outdated mechanical products still in the field, this 6500kg (14,300lb) dynamometer, the BlueLink, is the latest Crosby Straightpoint product to feature proprietary Bluetooth wireless technology.



The Bluetooth signal effortlessly connects to any iOS or Android smartphone that has our free HHP app installed, providing the operator with a wireless range of up to 100m or 328ft. This allows them to stand in a safe position from the load with no requirement to read a load on the loadcell itself. The app also allows the operator to log data versus time, or on events such as over- or under-load. An adjustable alarm will alert the operator on their smartphone if any overload is occurring.

Rigged using industry standard Crosby G2130 Shackles, the BlueLink has been designed to minimize headroom (156mm or 6.14in from eye to eye). With a design factor of over 500%, its compact lightweight design does not sacrifice on strength.

Constructed from high-quality aerospace grade aluminum, which is then hard-anodized, BlueLink features an advanced internal design structure. This design provides the product with an unrivaled strength to weight ratio. The use of a separate internal sealed enclosure administers the loadcell's electronic components with IP67 or NEMA6 environmental protection, even with the battery cover plate missing. All these features makes it an industry-leading compact dynamometer, even more suitable for use in the harshest industrial or leisure environments.

The BlueLink is powered by four standard AA alkaline batteries that provide in excess of 500 hours transmission time. Its internal antenna ensures safe transmissions of loads to an accuracy of  $\pm 0.2\%$  FS.

Part Numbers SP	<b>BLD6T5</b>
Crosby	2789218
Capacity	6.5 t
	14,300 lb
Resolution	0.001 t
	2 lb
Weight	1.5 kg
	3.3 lb
Design Factor	5:1
Battery Type	4 x AA alkaline batteries
Battery Life	500 hours
Operating Temperature	-10°C to +50°C / 14°F to 122°F
Accuracy	$\pm 0.2\%$ of full scale
Range	100 meters / 328 feet
Data Rate	3 Hz
Protection	IP67 / NEMA6
Dimension A	224 mm
	8.82 in
Dimension B	44 mm
	1.73 in
Dimension C	113.6 mm
	4.47 in
Dimension D	156 mm
	6.14 in
Dimension ØE	27.5 mm
	1.08 in
Dimension F	33 mm
	1.3 in

LOAD MONITORING



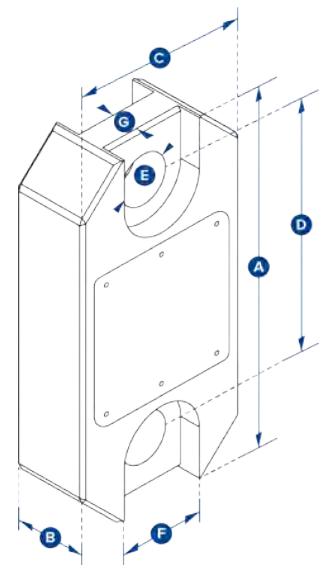
LOAD MONITORING

Loadlink Plus



Optional connection to Crosby SP's Handheld Plus part no. HHP 2789030

- Capacity from 1t to 300t.
- Unmatched weight-to-strength ratio.
- 30% lighter than competing dynamometers with the same safety rating.
- Large high resolution 25mm or 1in LCD display.
- Features full function push button controls for tare, choice of units (lbs, kg, kN, and metric tons), peak hold, preset tare, audible set-point alarm, and an overload counter.
- The highest standard resolution of any digital dynamometer on the market today (5000+ divisions).
- 100Hz peak hold.
- RS-485 serial output.
- 2-year warranty.
- DNV-GL Type Approval.
- Design validated by FEA.
- Complies with ASME B30.26.



2

Part Numbers SP	LLP1T	LLP2T5	LLP6T5	LLP12T	LLP25T	LLP35T	LLP55T	LLP75T	LLP100T	LLP150T	LLP200T	LLP250T	LLP300T	
Crosby	2789042	2789046	2789050	2789040	2789045	2789048	2789049	2789051	2789039	2789041	2789043	2789044	2789047	
Capacity	(te)	1000 kg	2.5	6.5	12	25	35	55	75	100	150	200	250	300
	(lb)	2,200	5,500	14,300	26,000	55,000	77,000	120,000	165,000	220,000	330,000	440,000	550,000	660,000
Resolution	(te)	0.5kg	0.001	0.001	0.002	0.005	0.005	0.01	0.01	0.05	0.05	0.1	0.1	0.1
	(lb)	1	2	2	5	10	10	20	20	100	100	200	200	200
Units	(metric)	kg												
	(imperial)	pounds												
Weight	(kg)	1.5	1.5	2.4	3.7	5	8.6	13	16	34	46	82	82	118
	(lb)	3.3	3.3	5.3	8.2	11	19	28.7	35.3	75	101.4	180.8	180.8	260
Design Factor		12:1	7:1	7:1	7:1	5:1	5:1	5:1	5:1	5:1	4:1	5:1	4:1	5:1
Battery Type	9v PP3													
Battery Life	80 hours continuous													
Display Type	6 digit 25mm or 1" LCD													
Operating Temp.	-10°C to +50°C / 14°F to 122°F													
Accuracy	±0.1% of full scale													
Protection	IP65 / NEMA4X													
Dimension A	(mm)	204	204	249	305	340	393	424	470	608	670	700	700	806
	(in)	8.03	8.03	9.80	12.01	13.39	15.47	16.69	18.50	23.94	26.38	27.56	27.56	31.73
Dimension B	(mm)	43	43	43	47	60	75	75	75	99	99	144	144	150
	(in)	1.69	1.69	1.69	1.85	2.36	2.95	2.95	2.95	3.90	3.90	5.67	5.67	5.91
Dimension C	(mm)	104	104	113	113	115	126	180	202	255	303	350	350	426
	(in)	4.09	4.09	4.45	4.45	4.53	4.96	7.09	7.95	10.04	11.93	13.78	13.78	16.77
Dimension D	(mm)	146	146	165	193	215	225	230	260	320	360	350	350	350
	(in)	5.75	5.75	6.50	7.60	8.46	8.86	9.06	10.24	12.60	14.17	13.78	13.78	13.78
Dimension ØE	(mm)	24.5	24.5	38	47.5	55	60	76	76	109	109	145	145	160
	(in)	0.96	0.96	1.50	1.87	2.17	2.36	2.99	2.99	4.29	4.29	5.71	5.71	6.30
Dimension F	(mm)	48	48	66	66	66	66	66	66	66	66	66	66	66
	(in)	1.89	1.89	2.60	2.60	2.60	2.60	2.60	2.60	2.60	2.60	2.60	2.60	2.60
Dimension G	(mm)	19	19	32	32	32	32	32	32	32	32	32	32	32
	(in)	0.75	0.75	1.26	1.26	1.26	1.26	1.26	1.26	1.26	1.26	1.26	1.26	1.26
Crosby Shackle	G2130						G2140							
Loading Pin Ø (mm)		19	19	25	35	51	57	57	70	83	95	121	127	152
	(in)	3/4	3/4	1	1 3/8	2	2 1/4	2 1/4	2 3/4	3 1/4	3 3/4	4 3/4	5	6

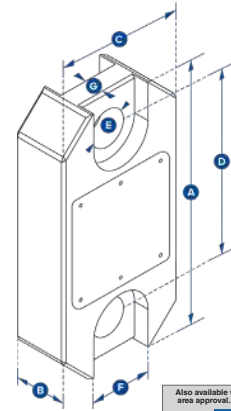


# Radiolink Plus

LOAD MONITORING



- Capable of weighing and dynamic load monitoring in capacities from 1t to 500t.
- Constructed of lightweight, aerospace grade aluminum.
- Environmentally sealed to IP67 or NEMA6.
- Proprietary 2.4 GHz wireless.
- Update rate of 3Hz and can be easily configured to run at industry-leading speeds of up to 200Hz.
- Remote on/off from handheld display or software.
- ATEX Zones 0, 1 & 2 available.
- Design validated by FEA.
- 2-year warranty.
- DNV-GL Type Approval.
- Complies with ASME B30.26.
- Bluetooth option is available and is supplied with a free HHP app for iOS and Android.



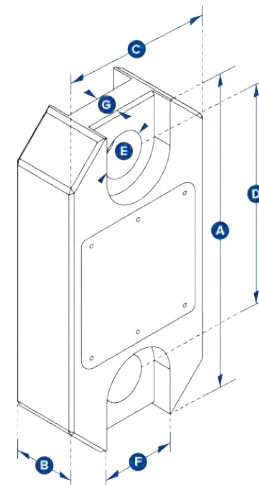
Part Number SP	RLP1T	RLP2T5	RLP6T5	RLP12T	RLP25T	RLP35T	RLP55T	RLP75T	RLP100T	RLP150T	RLP200T	RLP250T	RLP300T	RLP500T	
<b>Crosby</b>	2789084	2789089	2789094	2789082	2789088	2789091	2789093	2789095	2789081	2789083	2789085	2789087	2789090	2789092	
<b>Capacity</b>	(te) 1,000 kg	2.5	6.5	12	25	35	55	75	100	150	200	250	300	500	
	(lb) 2,200	5,500	14,300	26,000	55,000	77,000	120,000	165,000	220,000	330,000	440,000	550,000	660,000	1,100,000	
<b>Resolution</b>	(te) 0.5 kg	0.001	0.001	0.002	0.005	0.005	0.01	0.01	0.05	0.05	0.1	0.1	0.1	0.1	
	(lb) 1	2	2	5	10	10	20	20	100	100	200	200	200	200	
<b>Units</b>	(metric) kg	metric tons													
	(imperial)	pounds													
<b>Weight</b>	(kg) 1.5	1.5	2.4	3.7	5	8.6	13	16	34	46	82	82	118	193	
	(lb) 3.3	3.3	5.3	8.2	11	19	28.7	35.3	75	101.4	180.8	180.8	260	425.5	
<b>Design Factor</b>	12:1	7:1	7:1	7:1	5:1	5:1	5:1	5:1	5:1	4:1	5:1	4:1	5:1	5:1	
<b>Battery Type</b>	Handheld 2 x AA / Loadcell 4 x AA														
<b>Battery Life</b>	Handheld - 40 hours / Loadcell 1200 hours continuous (Loadcell 500 hours if Bluetooth)														
<b>Display Type</b>	240 x 128 pixel Multi-line dot matrix with backlight														
<b>Operating Temp.</b>	-10°C to +50°C / 14°F to 122°F														
<b>Accuracy</b>	±0.1% of full scale														
<b>Frequency</b>	2.4 GHz														
<b>System Range (max)</b>	1000 meters / 3280 feet (100 meters / 328 feet if Bluetooth) (500 meters / 1640 feet if ATEX/IECEx)														
<b>Data Rate</b>	3 Hz - up to 200 Hz can be ordered for dynamic load monitoring applications														
<b>Protection</b>	IP67 / NEMA6														
<b>Dimension A</b>	(mm) 204	204	249	305	340	393	424	470	608	670	700	700	806	930	
	(in) 8.03	8.03	9.80	12.01	13.39	15.47	16.69	18.50	23.94	26.38	27.56	27.56	31.73	36.61	
<b>Dimension B</b>	(mm) 43	43	43	47	60	75	75	75	99	99	144	144	150	150	
	(in) 1.69	1.69	1.69	1.85	2.36	2.95	2.95	2.95	3.90	3.90	5.67	5.67	5.91	5.91	
<b>Dimension C</b>	(mm) 104	104	113	113	115	126	180	202	255	303	350	350	426	570	
	(in) 4.09	4.09	4.45	4.45	4.53	4.96	7.09	7.95	10.04	11.93	13.78	13.78	16.77	22.44	
<b>Dimension D</b>	(mm) 146	146	165	193	215	225	230	260	320	360	350	350	350	450	
	(in) 5.75	5.75	6.50	7.60	8.46	8.86	9.06	10.24	12.60	14.17	13.78	13.78	13.78	17.72	
<b>Dimension ØE</b>	(mm) 24.5	24.5	38	47.5	55	60	76	76	109	109	145	145	160	200	
	(in) 0.96	0.96	1.50	1.87	2.17	2.36	2.99	2.99	4.29	4.29	5.71	5.71	6.30	7.87	
<b>Dimension F</b>	(mm) 48	48	65	NOT RELEVANT IN THIS CAPACITY											
	(in) 1.89	1.89	2.60												
<b>Dimension G</b>	(mm) 19	19	32	NOT RELEVANT IN THIS CAPACITY											
	(in) 0.75	0.75	1.26												
<b>Crosby Shackle</b>	G2130					G2140					G2160				
<b>Loading Pin Ø (mm)</b>	19	19	25	35	51	57	57	70	83	95	121	127	152	180	
	(in) 3/4	3/4	1	1 3/8	2	2 1/4	2 1/4	2 3/4	3 1/4	3 3/4	4 3/4	5	6	7 1/8	



# Wirelink Plus



- Available in capacities ranging from 1t to 300t.
- The non-indicating version of Crosby SP's popular Radiolink Plus and Loadlink Plus digital dynamometer tension loadcells.
- Multiple output options to include mV/V, analog out, ASCII, MODBUS RTU, and CAN-BUS.
- Constructed of lightweight, aerospace grade aluminum.
- Available with IP68 environmental protection.
- supplied with a 10-meter cable as standard, however, usable cable length varies greatly with lengths available to 1,500 meters depending on output format.
- Options for subsea use available.
- 2-year warranty.
- DNV-GL Type Approval.
- Complies with ASME B30.26.



LOAD MONITORING

Part Numbers SP	WLP1T	WLP2T5	WLP6T5	WLP12T	WLP25T	WLP35T	WLP55T	WLP75T	WLP100T	WLP150T	WLP200T	WLP250T	WLP300T
Crosby	2789154	2789158	2789273	2789152	2789157	2789160	2789269	2789161	2789151	2789153	2789155	2789156	2789159
Capacity	(te) 1000 kg	2.5	6.5	12	25	35	55	75	100	150	200	250	300
	(lb) 2,200	5,500	14,300	26,000	55,000	77,000	120,000	165,000	220,000	330,000	440,000	550,000	660,000
Resolution	(te) 0.5 kg	0.001	0.001	0.002	0.005	0.005	0.01	0.01	0.05	0.05	0.1	0.1	0.1
	(lb) 1	2	2	5	10	10	20	20	100	100	200	200	200
Units	(metric) kg	metric tons											
	(imperial) pounds	pounds											
Weight	(kg) 1.5	1.5	2.4	3.7	5	8.6	13	16	34	46	82	82	118
	(lb) 3.3	3.3	5.3	8.2	11	19	28.7	35.3	75	101.4	180.8	180.8	260
Design Factor	12:1	7:1	7:1	7:1	5:1	5:1	5:1	5:1	5:1	4:1	5:1	4:1	5:1
Operating Temp.	-10°C to +50°C / 14°F to 122°F												
Accuracy	±0.1% of full scale												
Protection	IP67 / NEMA6												
Dimension A	(mm) 204	204	249	305	340	393	424	470	608	670	700	700	806
	(in) 8.03	8.03	9.80	12.01	13.39	15.47	16.69	18.50	23.94	26.38	27.56	27.56	31.73
Dimension B	(mm) 43	43	43	47	60	75	75	75	99	99	144	144	150
	(in) 1.69	1.69	1.69	1.85	2.36	2.95	2.95	2.95	3.90	3.90	5.67	5.67	5.91
Dimension C	(mm) 104	104	113	113	115	126	180	202	255	303	350	350	426
	(in) 4.09	4.09	4.45	4.45	4.53	4.96	7.09	7.95	10.04	11.93	13.78	13.78	16.77
Dimension D	(mm) 146	146	165	193	215	225	230	260	320	360	350	350	350
	(in) 5.75	5.75	6.50	7.60	8.46	8.86	9.06	10.24	12.60	14.17	13.78	13.78	13.78
Dimension ØE	(mm) 24.5	24.5	38	47.5	55	60	76	76	109	109	145	145	160
	(in) 0.96	0.96	1.50	1.87	2.17	2.36	2.99	2.99	4.29	4.29	5.71	5.71	6.30
Dimension F	(mm) 48	48	65	Not relevant in this capacity									
	(in) 1.89	1.89	2.60	Not relevant in this capacity									
Dimension G	(mm) 19	19	32	Not relevant in this capacity									
	(in) 0.75	0.75	1.26	Not relevant in this capacity									
Crosby Shackle	G2130						G2140						
Loading Pin Ø (mm)	19	19	25	35	51	57	57	70	83	95	121	127	152
	(in) 3/4	3/4	1	1 3/8	2	2 1/4	2 1/4	2 3/4	3 1/4	3 3/4	4 3/4	5	6

Part Number	Description
ICA1	3 wire 0-10v analogue output
ICA2	3 wire 0-5v analogue output
ICA3	4 wire +/- 10v analogue output
ICA4	3 wire 4-20mA analogue output
ICA5	2 wire 4-20mA analogue output



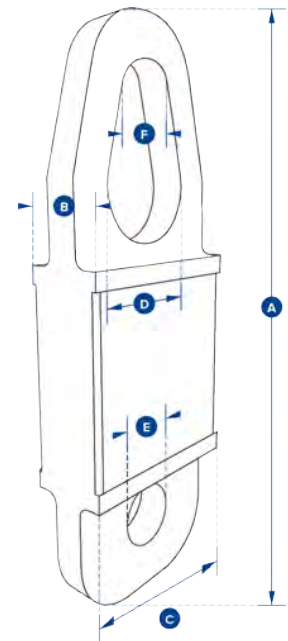


Towcell®

LOAD MONITORING



- Unique design fits any standard 2" tow hitch.
- Unmatched battery life of 500 hrs.
- Waterproof IP67 or NEMA6.
- Internal antenna.
- Compact size and lightweight.
- Proprietary 2.4 GHz wireless communication.
- Design validated by FEA.
- Bluetooth enabled and is supplied with a free HHP app for iOS and Android.



The Crosby Straightpoint Towcell® is a 25kN wireless loadcell, specifically engineered for the emergency services, salvage, and 4x4 industries. The Towcell allows for increased safety and the avoidance of costly overloads by providing real-time monitoring of tensile towing forces during recovery, clearance and salvage efforts.

**The Towcell is rugged, lightweight, compact, and can be installed, with ease, onto any tow bar, whether it's a standard 52mm or 2in ball or pin assembly and is ready to use in seconds.**

Modeled after Crosby SP's bestselling Radiolink Plus, the Towcell is constructed of high-quality aircraft grade aluminum. It features an advanced internal design structure, providing the product with an unrivaled strength to weight ratio. This optimal balance allows for the use of a separate internally sealed enclosure. This administers the internal electronic components with an IP67 or NEMA6 waterproof environmental protection, even with the battery cover plate missing.

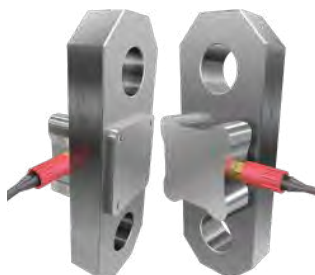
Towcell utilizes an unbreakable internal antenna and boasts an unmatched battery life.

Part Numbers SP	Towcell - Bluetooth
Crosby	2789271
Capacity	25 kN
Resolution	0.01 kN
Weight	1.4 kg
	3 lb
Design Factor	5:1
Battery Type	4 x AA Alkaline
Battery Life	500 hours continuous
Operating Temp.	-10°C to +50°C / 14°F to 122°F
Accuracy	±0.1% of full scale
Frequency	2.4 GHz
System Range (max)	100 meters / 328 feet
Data Rate	50 Hz
Protection	IP67 / NEMA6
Dimension A	300 mm
	11.81"
Dimension B	43 mm
	1.70"
Dimension C	104 mm
	4.09"
Dimension ØD	51 mm
	2.00"
Dimension ØE	27 mm
	1.06"
Dimension ØF	31 mm
	1.22"

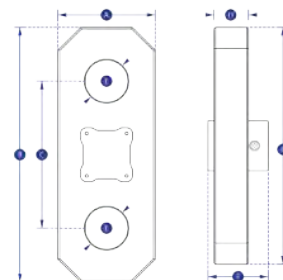
Only sold in Europe. Does not meet US towing requirements.



# SubseaLink



- Manufactured for use in subsea or submersible projects.
- On board data-logging option.
- Pressure tested to depth of 2000m/6562ft.
- SubConn connector.
- Environmental protection IP68/NEMA6P.
- Output options include mV/V to the Crosby SP Handheld Plus, 4-20mA or 0-10v analog to a PLC, data-logger or The Multi Operation Survey System (MOSS), RS485 or an integral data-logger storing up to one million readings and powered by an internal battery.
- Constructed from 17-4PH stainless steel.
- Designed to fit with The Crosby Group ROV shackles.
- Option for ROV mounting on the SL body itself.



LOAD MONITORING

Part Numbers SP	SL6T5	SL12T	SL25T	SL35T	SL55T	SL85T	SL120T
Crosby	2789352	2789353	2789354	2789355	2789356	2789357	2789358
WLL (te)	6.5	12	25	35	55	85	120
(lb)	14,300	26,000	55,000	77,000	120,000	185,000	260,000
Weight (kg)	7	10	16	22	34	46	67
(lb)	15	23	34	49	75	101	148

Design Factor

5:1

Output

Options for: mV/V / 4-20mA / 0-10v / RS485 or internal data logger

Operating Temp.

-10°C to +50°C / 14°F to 122°F

Accuracy

±0.1% of full scale

Max depth of use

2,000 meters / 6,562 feet

Material

17-4 PH Stainless steel

MTBF to WLL

Typically 50 million cycles

Elongation

Typically <0.4mm / at WLL

Dimension A (mm)	95	100	130	150	168	190	220
(in)	3.74	3.94	5.12	5.91	6.69	7.48	8.66
Dimension B (mm)	240	300	350	400	450	490	550
(in)	9.45	11.81	13.78	15.75	17.72	19.29	21.65
Dimension C (mm)	180	200	230	250	260	290	335
(in)	7.09	7.87	9.06	9.84	10.24	11.42	13.19
Dimension D (mm)	25	40	45	50	65	75	86
(in)	0.98	1.57	1.77	1.97	2.56	2.95	3.39
Dimension ØE (mm)	30	40	55	60	75	88	100
(in)	1.18	1.57	2.17	2.36	2.95	3.46	3.94
Dimension F (mm)	73	88	93	98	113	123	134
(in)	2.87	3.46	3.66	3.86	4.45	4.84	5.28

Crosby Shackle

G2140 or G2100 or G2110 ROV shackles

Data-logger Measurement Rate	Days
1 per second	10
1 per 30 seconds	57
1 per minute	729
1 per 2 minutes	1445
1 per 30 minutes	3423
1 per hour	3600
1 per 2 hours	3694
1 per 8 hours	3769